

# EVAC SYSTEM TRIP CIRCUITS & SPEAKER HOOK-UP

## Dry Contact Initiation (Trip) - Located at the Top of the CE Module

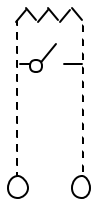
Programming Jumpers must be in Position "A" in both Headers # H4 & H5 located above terminal # 3 & 4 at bottom right quadrant of CE Module.

## Reverse Polarity Initiation (Trip) - Located at the Bottom of the CE Module

Programming Jumpers must be in Position "RP" in both Headers # H4 & H5 located above terminal # 3 & 4 at bottom right quadrant of CE Module.

### Dry Contact Initiation (Trip)

Remove 1k-ohm 1Watt  
EOL Resistor  
from across Terminals  
# A1, A2 and place across  
trip contacts for Supervision

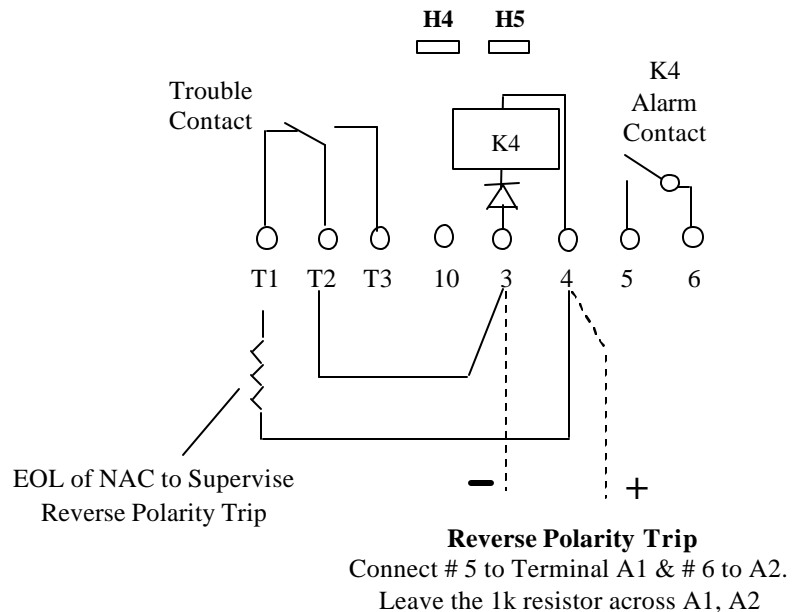


**A1 A2**

Terminals A1, A2 are located at the  
Top Left of the Common Equipment  
(C E) Module

### Reverse Polarity Initiation (Trip)

Move to H4 & H5 to "RP" for Reverse Polarity Trip



## CONNECTING SPEAKERS TO THE EVAC SYSTEM

**Terminals L1R, L1, L2, & L2R are located at the Top of the Common Equipment (C E) Module.**

**Test Reading:** With the EOL 39 k-ohm, 1-Watt resistor connected, there should be a reading of between 7 V and 9 V DC across Terminals # L1 & L2.

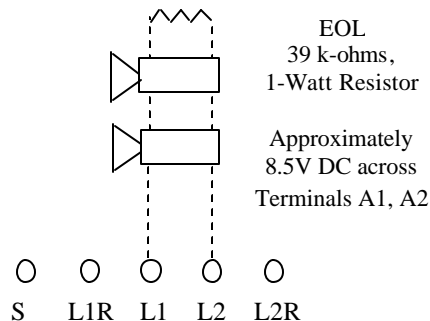
### **Selecting the Voltage to Speakers:**

Before connecting speakers, make sure that the speakers will be matched to the output voltage from the EVAC.

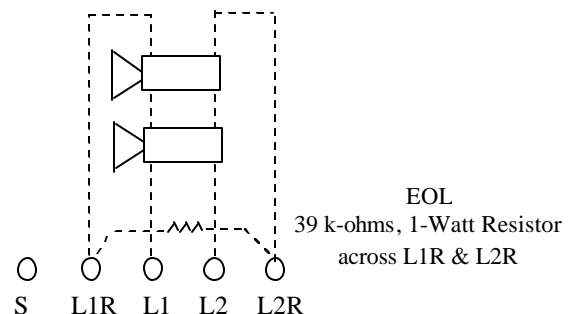
There are TWO Programming Headers marked **H1** and **H2** located at the Top Left and Top Right corners of the "CE" Module. The Programming Headers are marked 25 V/70 V.

**25 Volt Speakers:** *Both* H1 & H2 micro-shunts must be placed in the "25 V" positions (CENTER and LEFT pins of headers).

**70 Volt Speakers:** *Both* H1 & H2 micro-shunts must be placed in the "70 V" positions (CENTER and RIGHT pins of headers).



Style "Y" (Class "B") Circuit



Style "Z" (Class "A") Circuit